

HOVEDDIMENSJONER

Lengde o.a. 18,50 m
 Lengde PP. 17,20 m
 Bredder spt. 7,20 m
 Dybde i riss 2,35 m
 Dypgang KVL 0,95 m

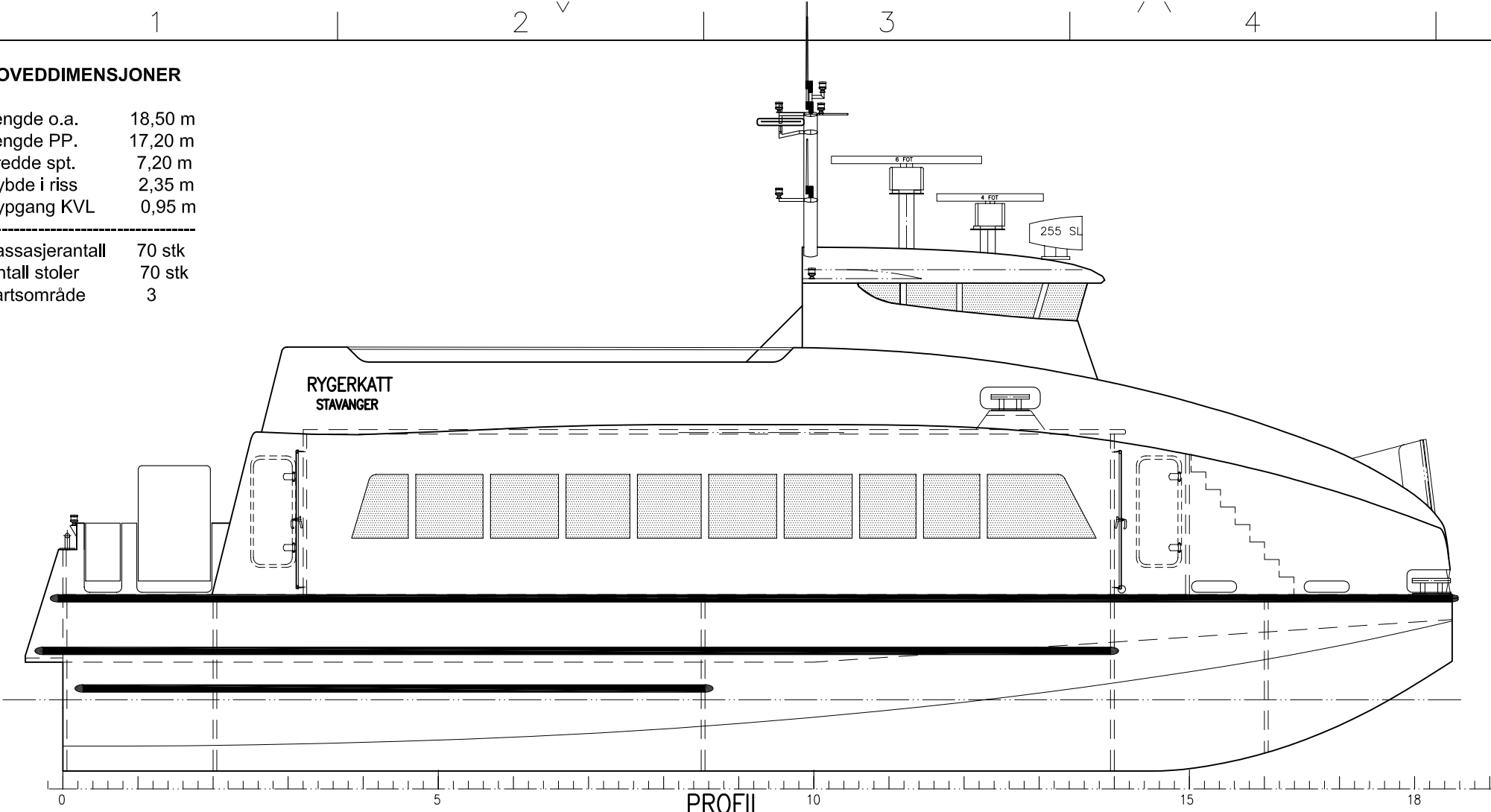
Passasjerantall 70 stk
 Antall stoler 70 stk
 Fartsområde 3

A

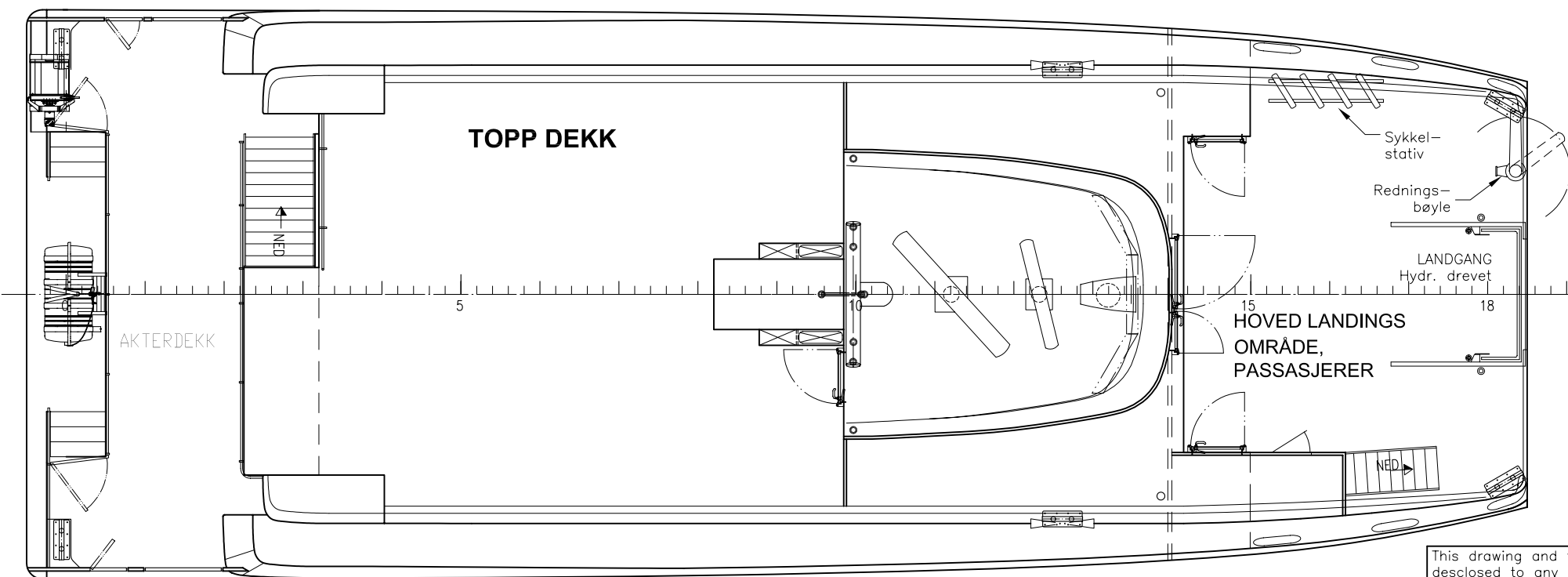
B

C

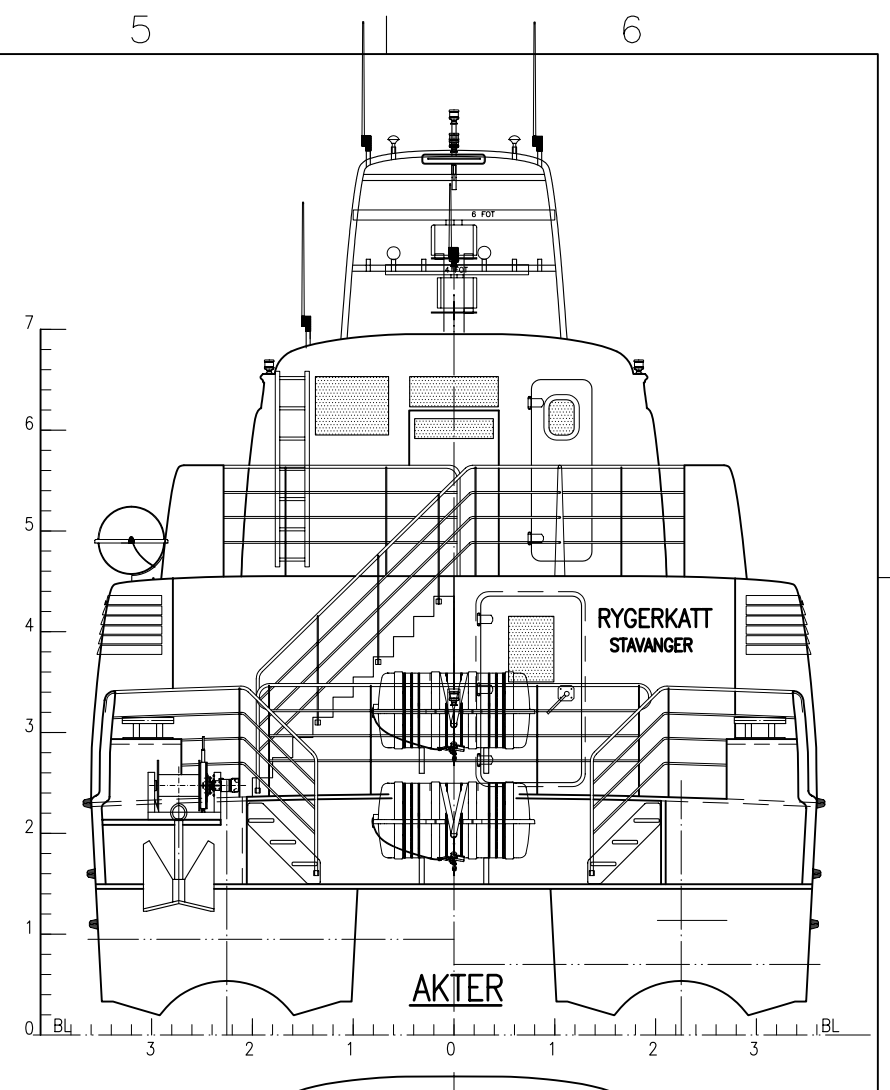
D



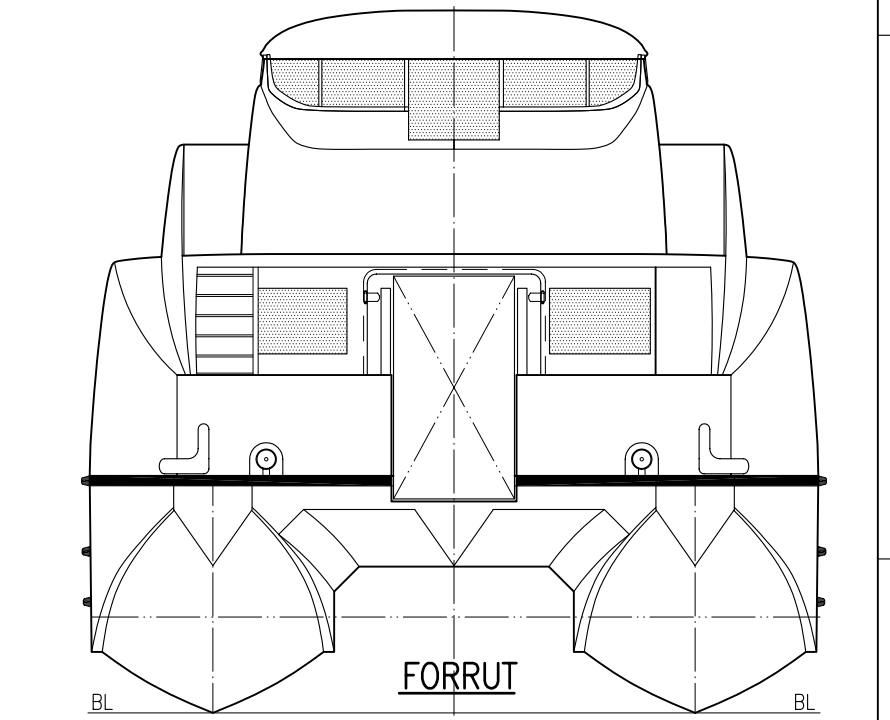
PROFIL



UTVENDIGE DEKK



AKTER



FORRUT

This drawing and the design is our property and must not be disclosed to any third part without permission.

Date	14.01.03	Drawn	IAA	Traced	Scale
Checked		Stand.check.		Approved	1:75

CAD system AUTOCAD R04 Proj.method

Br. Aa AS
 N-6829 Hyen, NORWAY
 Tel. +47 57868700
 braa@braa.no - www.braa.no

Title
 General Arrangement
 Utvendig

Project/Vessel
 Rygerkatt

Drawing no.
 236 - 101 - 001 - T - 3

Repl. for
 Repl. by
 236-101-002-T-2

Rev.	Om råde	Dato	Beskrivelse	IAA	BR	br
3		15.02.07	JUSTERT TEGNINGNUMMER	IAA		
2		26.05.03	AS BUILT	BR		

1

2

3

4

5

6